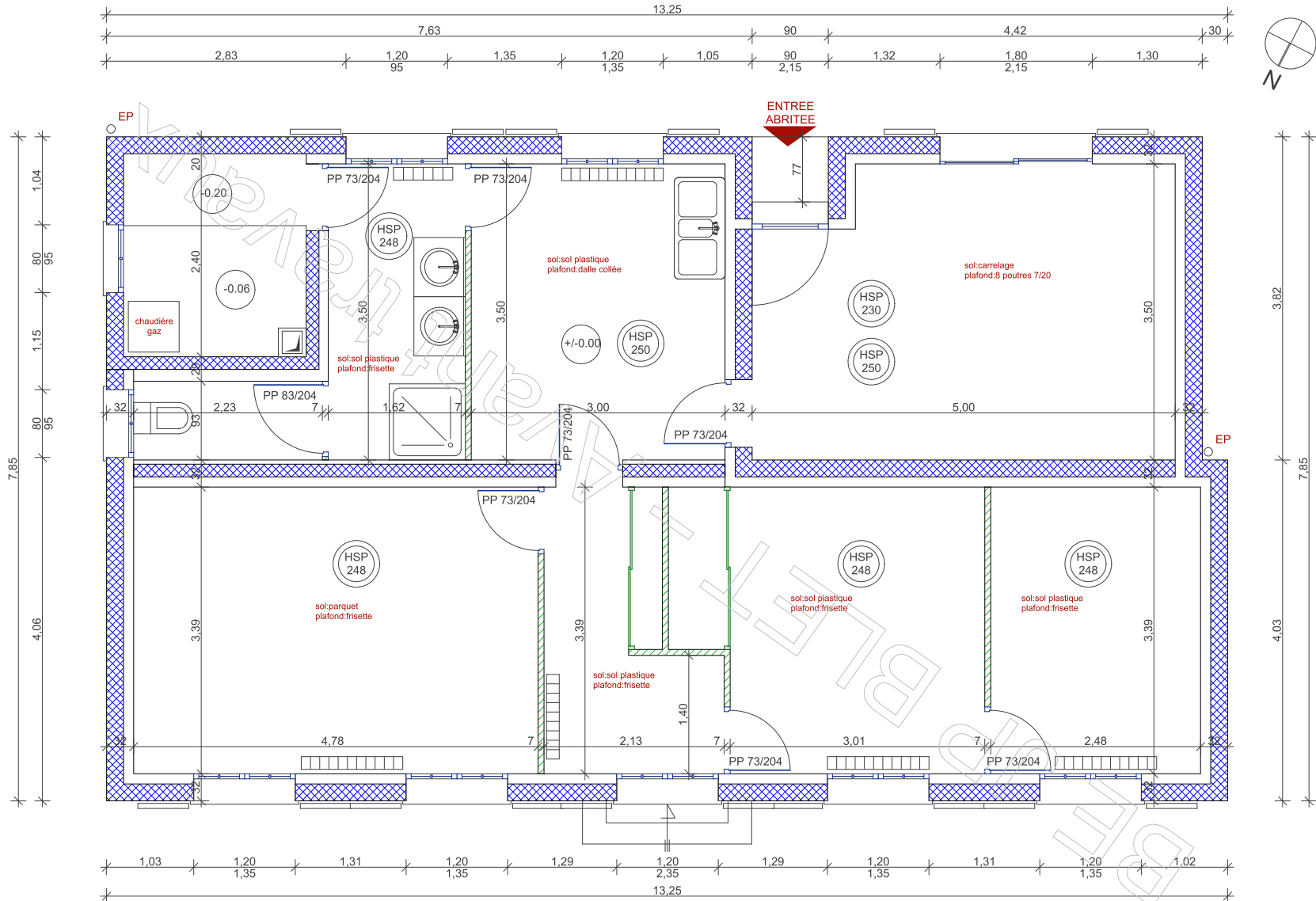
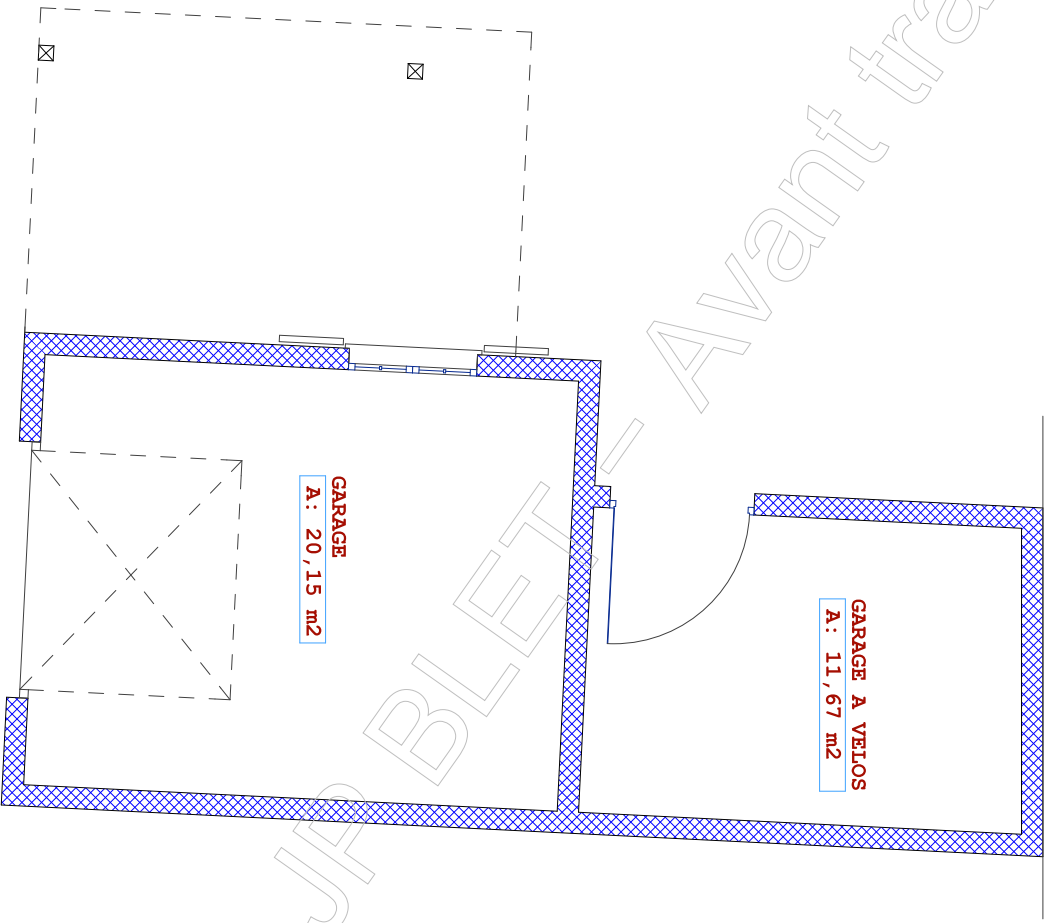


avenue du Général Charles De Gaulle

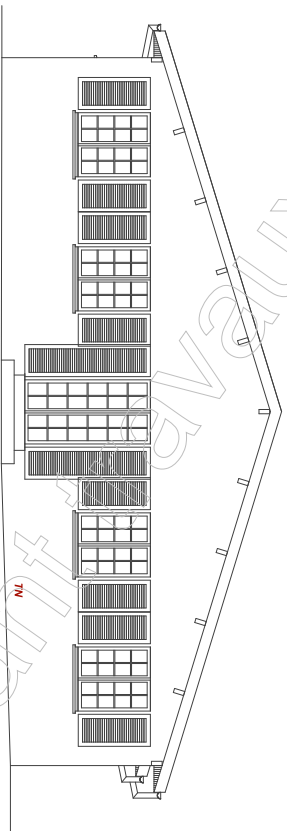
PLAN DE MASSE
Ech:1/200e
(avant travaux)



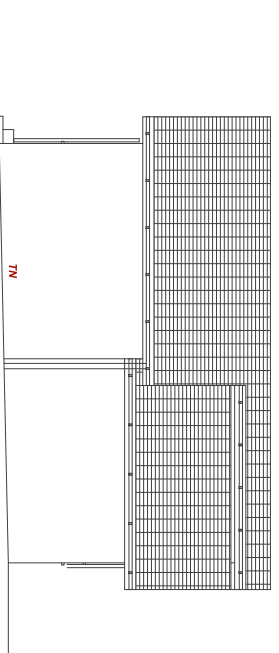
REZ-DE-CHAUSSEE
Ech:1/50e
(avant travaux)



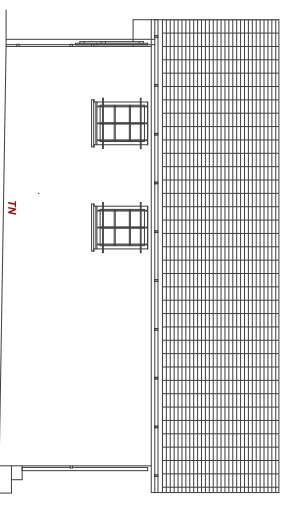
BE JPA BLET - Avant travaux



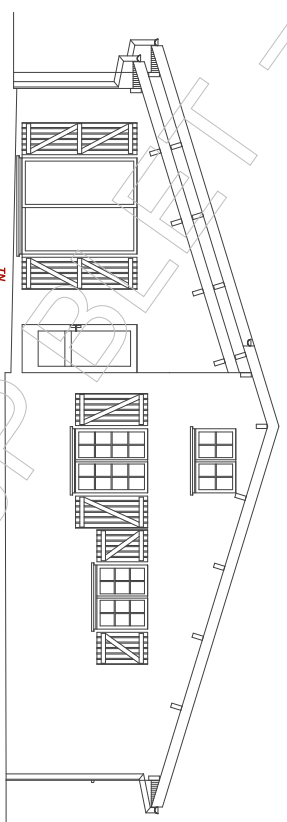
FACADE NORD



FACADE OUEST



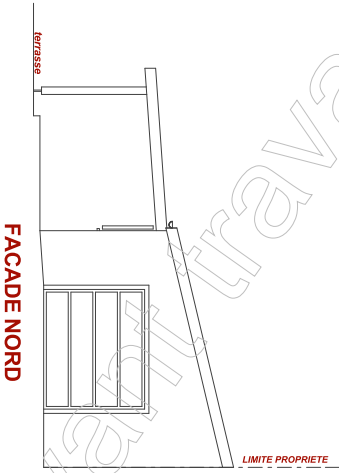
FACADE EST



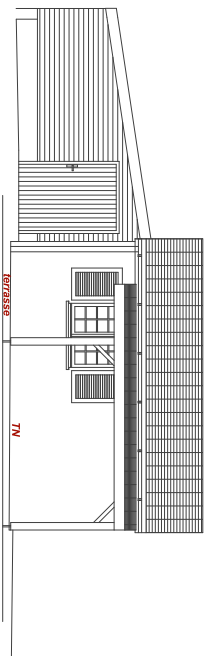
FACADE SUD

FACADES Ech:1/100e

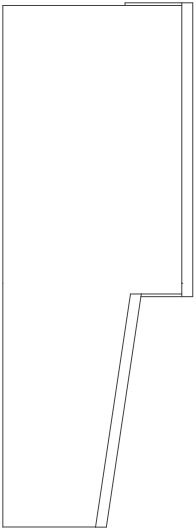
BE up - Avant-projet



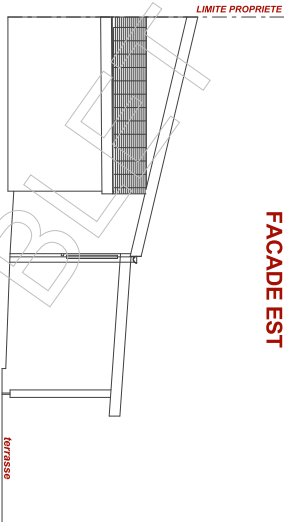
FACADE NORD



FACADE EST



FACADE OUEST



FACADE SUD

FACADES Ech:1/100e

BE J/P B/L - Architectural Works